

Wheat Germ Topo I Assay and Dilution Buffers



Product Description (Product Numbers WGB001 and WGB002)

For use with Wheat Germ topoisomerase I enzyme.
Store at -80 °C.

For *in vitro* laboratory research use only.

Dilution Buffer

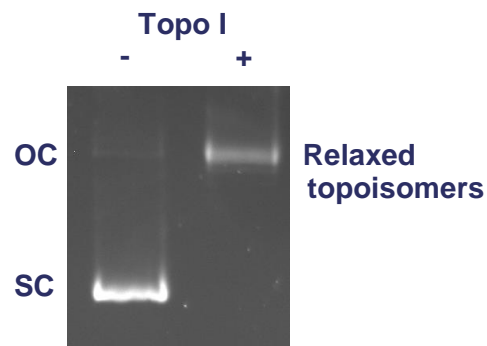
50 mM Tris.HCl (pH 7.9)
500 mM NaCl
1 mM DTT
1 mM EDTA
50 % (w/v) glycerol

Assay Buffer (supplied as 2X stock)

50 mM Tris.HCl (pH 7.9)
1 mM EDTA
1 mM DTT
20 % (v/v) glycerol
50 mM NaCl

Relaxation Assay

1 U topoisomerase I is incubated with 0.5 µg of relaxed pBR322 in a reaction volume of 30 µl at 37 °C for 30 minutes in Assay Buffer. Gels are run in the absence of ethidium bromide or chloroquine.



Quality Control

Endonuclease assay: 0.5 µg supercoiled pBR322 incubated with 0.5 U of wheatgerm topo I for 6 hours at 37 °C shows no detectable conversion of supercoiled DNA to either open circular or linear forms when assayed by agarose gel electrophoresis.

Reference

Dynan, W.S., Jendrisak, J.J., Hager, D.L. and Burgess, R.R. (1981) Purification and Characterisation of Wheat Germ Topoisomerase I (Nicking-closing enzyme). *J. Biol. Chem.* 256 PP. 5860- 5865