

Wheat Germ Topoisomerase I



Product Description (Product Numbers WGT101 and WGT102)

Topoisomerase I is prepared from wheat germ. The enzyme is supplied at a minimum concentration of 5 U/ μ l in Dilution Buffer. Store at -80°C . It is recommended that the enzyme is aliquoted to avoid repeated freeze-thaw cycles.

For *in vitro* laboratory research use only.

Dilution Buffer

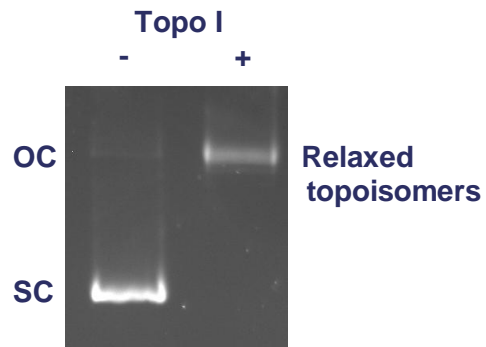
50 mM Tris.HCl (pH 7.9)
500 mM NaCl
1 mM DTT
1 mM EDTA
50 % (w/v) glycerol

Assay Buffer (supplied as 2X stock)

50 mM Tris.HCl (pH 7.9)
1 mM EDTA
1 mM DTT
20 % (v/v) glycerol
50 mM NaCl

Relaxation Assay

1 U topoisomerase I is incubated with 0.5 μ g of relaxed pBR322 in a reaction volume of 30 μ l at 37°C for 30 minutes in Assay Buffer. Gels are run in the absence of ethidium bromide or chloroquine.



Quality Control

Endonuclease assay: 0.5 μ g relaxed pBR322 incubated with 1 U of topo I for 6 hours at 37°C shows no detectable conversion of relaxed DNA to either open circular or linear forms when assayed by agarose gel electrophoresis.

Reference

Dynan, W.S., Jendrisak, J.J., Hager, D.L. and Burgess, R.R. (1981) Purification and Characterisation of Wheat Germ Topoisomerase I (Nicking-closing enzyme). *J. Biol. Chem.* 256 PP. 5860- 5865